



Helping *you* move



27 Chetwynd End, Newport, TF10 7JE

A Fabulous Period Grade 2 Listed Town House situated in a brilliantly convenient location for Newport Town Centre and having immense Character throughout and the added benefit of 2 large Car Parking Spaces

Offers in the Region of
£370,000

27 Chetwynd End, Newport, TF10 7JE

Overview

- Fabulous Period Town House
- Grade 2 Listed
- Very Attractive Kitchen with Adjoining Breakfast Room
- Sun Room
- Separate Dining Room
- Spacious Character Lounge
- Cellar, Feature Staircase
- 3 Lovely Bedrooms and 2 Bathrooms
- Rear Courtyard Garden and Enclosed Front Garden
- 2 Large Parking Spaces.
- EPC Rating - E-40, Council Tax Band C



BRIEF DESCRIPTION

A superb grade 2 listed Town House well situated for Newport Town Centre and offering amazingly stylish period accommodation of: Entrance Hall, Lounge, Dining Room, Kitchen, Adjoining Breakfast Sun Room, Cellar.

The first floor comprises: 3 Bedrooms and 2 Bathrooms.

Externally there is a Walled Courtyard Garden to the rear and enclosed pretty, established Garden to the front. To the side there is generous parking for 2 cars.

LOCATION

The property is just 0.4 miles from Newport's busy High Street, with its mix of shops, boutiques, cafes, pubs and a Victorian indoor market - and is within the catchment area of Newport's highly regarded Primary, High and Grammar Schools.

A wider selection of shops, amenities and employment opportunities are available in Telford, Stafford and Shrewsbury - and the excellent rail connections from Telford and Stafford mean Birmingham and Manchester are in commutable distance.



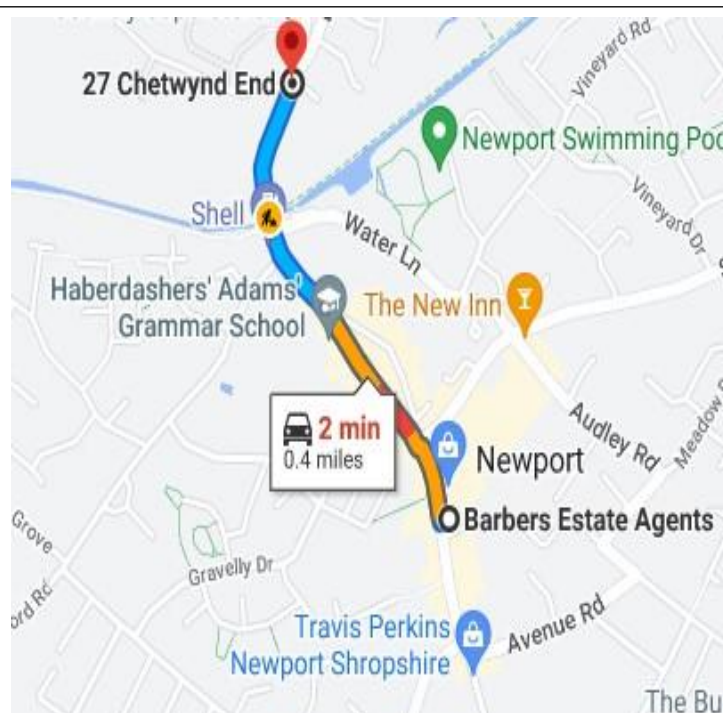
Your **Local** Property Experts
01952 820 239



USEFUL INFORMATION: TO VIEW THIS PROPERTY: Please contact our Newport Office, 30 High Street, Newport, TF10 7AQ or call us on 01952 820239. Email: Newport@barbers-online.co.uk

SERVICES: We are advised that all mains services are available. Barbers have not tested any apparatus, equipment, fittings etc or services to this property, so cannot confirm that they are in working order or fit for purpose. A buyer is recommended to obtain confirmation from their Surveyor or Solicitor.

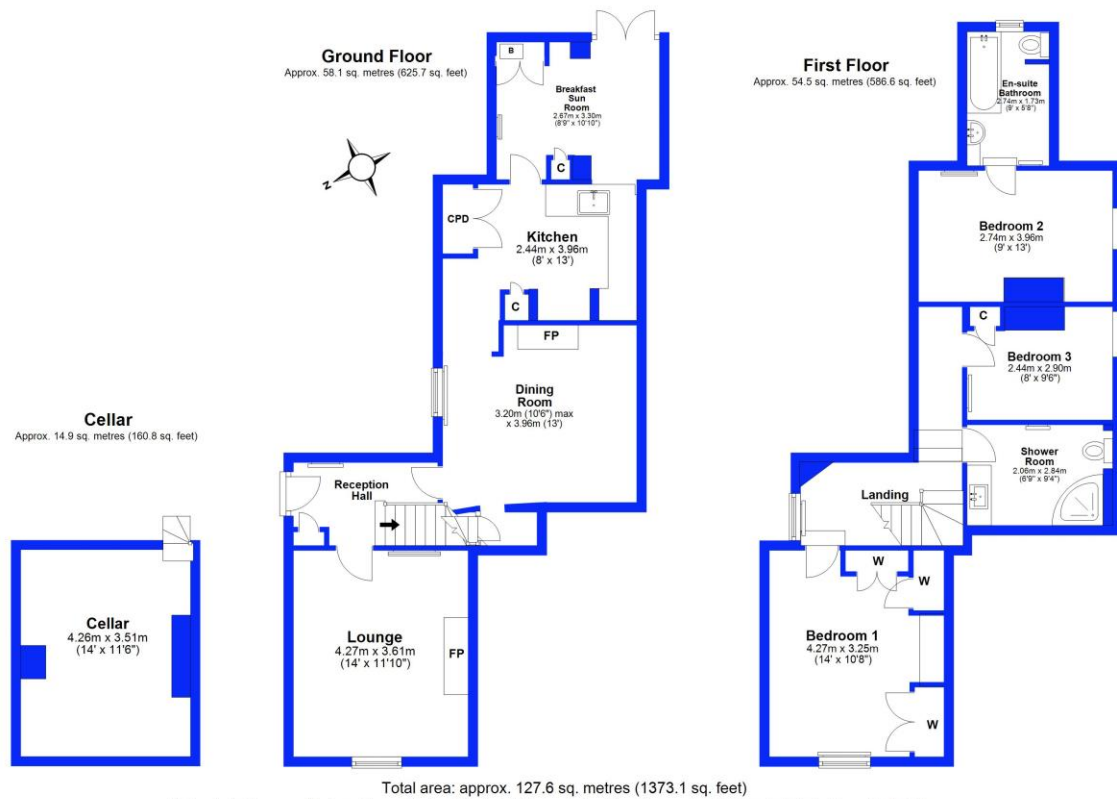
LOCAL AUTHORITY: Telford & Wrekin Council, Southwater One, Southwater Square, Southwater Way, Telford, TF3 4JG. Tel: 01952 380000



DIRECTIONS: From our office head north on High Street, go straight across at the mini-roundabout and continue onto Lower Bar, continue onto Chetwynd End and the property will be located on the right hand side as identified by our For Sale Board.

PROPERTY INFORMATION: We believe this information to be accurate, but it cannot be guaranteed. The fixtures, fittings, appliances and mains services have not been tested. If there is any point which is of particular importance please obtain professional confirmation. All measurements quoted are approximate. These particulars do not constitute a contract or part of a contract.

AML REGULATIONS: To ensure compliance with the latest Anti Money Laundering Regulations all intending purchasers must produce identification documents prior to the issue of sale confirmation. To avoid delays in the buying process please provide the required documents as soon as possible. We may use an online service provider to also confirm your identity. A list of acceptable ID documents is available upon request.



27 Chetwynd End, Newport



Selling your home?

If you are considering selling your home, please contact us today for your no obligation free market appraisal. Our dedicated and friendly team will assist you 6 days a week. Get in touch today! Tel: 01952 820 239

30 High Street, Newport, TF10 7AQ
Tel: 01952 820 239
Email: newport@barbers-online.co.uk

Barbers

IMPORTANT: we would like to inform prospective purchasers that these sales particulars have been prepared as a general guide only. A detailed survey has not been carried out, nor the services, appliances and fittings tested. Room sizes should not be relied upon for furnishing purposes and are approximate. If floor plans are included, they are for guidance purposes only and illustration purposes only and may not be to scale. If there are any important matters likely to affect your decision to buy, please contact us before viewing the property.